



GENUINE PARTNER GROUP
ĐỐI TÁC CHÂN THẬT

“Your Success is Our Success”

ABOUT GENUINE PARTNER GROUP: FROM THE BEGIN TO NOW

GENUINE PARTNER GROUP was established in 2009 and has been providing a comprehensive range of logistics services, including container depot, freight transportation, supply chain management, warehousing and distribution, expedited and multimodal shipping services in Vietnam, Cambodia & Thailand.

At **GENUINE PARTNER GROUP**, we utilize advanced technology and modern management systems to ensure transparency, accurate data retrieval, and flexibility in our operations. With the development of **GENUINE PARTNER GROUP** more than 14 years, we have established **GPG ECOSYSTEM** that revolves around building a secure, stable, and sustainable business environment to create value for the shareholders, customers and stakeholders.

At **GENUINE PARTNER GROUP**, we emphasize caring of our customers' needs as our group key success factor. **GENUINE PARTNER GROUP** focuses and highly values the QUALITY

- Quality of service must be guaranteed
- Customer service must be dedicated
- Self-conscious improvement must be prior
- Employees' lives must be cared
- Community values must be concerned

In year 2023, **GENUINE PARTNER GROUP**'s Core Cultural Values focus on **HUMANITY – SERVICE – UNIFICATION – HONESTY**

For year 2024, **GENUINE PARTNER GROUP**'s Core Cultural Values move on **AUTONOMY – SERVICE – INITIATIVE – CHANGE**

VISION

To provide innovative and sustainable solutions base on cutting-edge logistics that improve the lives of people, while protecting the planet for future generations.

MISSION

The **GPG ECOSYSTEM** always innovates to bring quality products and services to businesses and customers. At the same time, it creates and delivers value-added benefits to all stakeholders, contributing positively to the sustainable development of the society.

OUR MORALE & SLOGAN: VALUE TO KEEP THE GROWTH MOMENTUM

We value our customer's care as equally as we value our partner's businesses and customer's success in any circumstances.

Chúng tôi coi trọng việc chăm sóc Khách hàng và Đối tác ngang bằng với sự thành công trong kinh doanh của Đối Tác và Khách hàng trong bất kỳ hoàn cảnh nào.

MORALE

***The path to success is nothing more than wisdom and patience,
Commitment to success is nothing more than sincerity and compassion.***

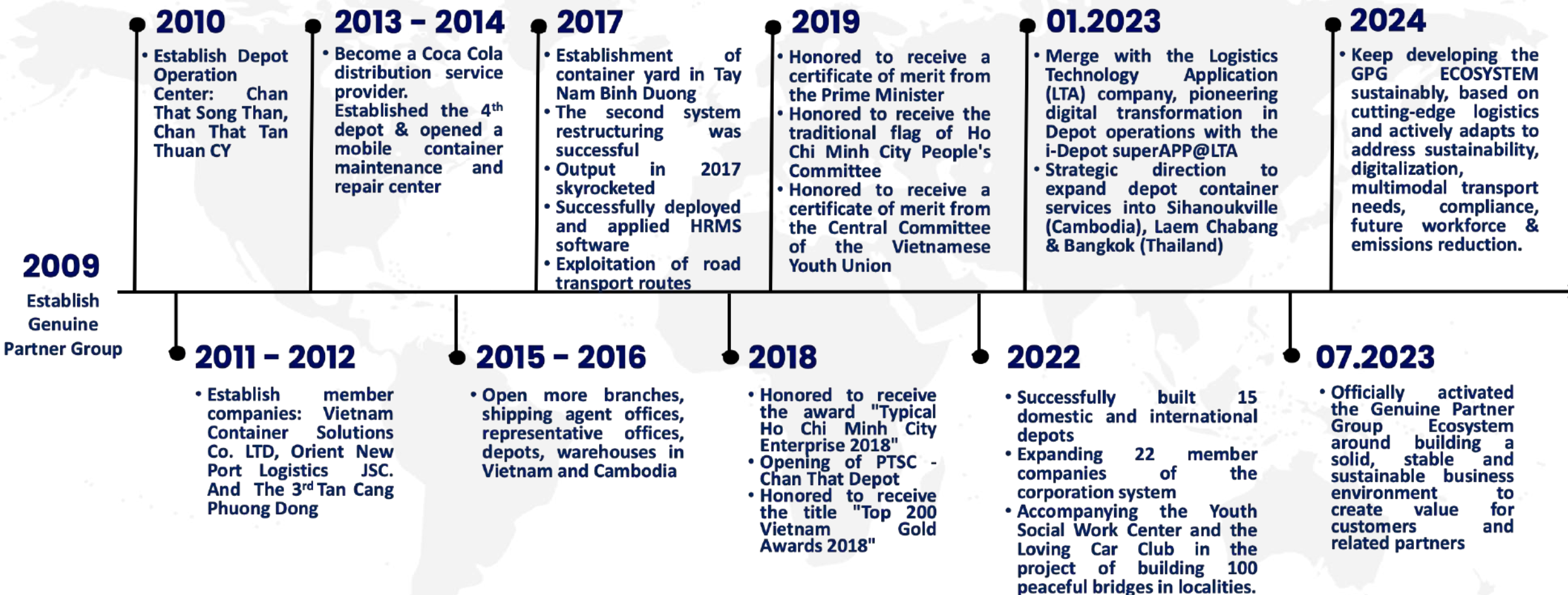
*Con đường đạt đến thành công không gì hơn trí tuệ và lòng nhẫn nại
Bền chắc trong sự thành công không gì hơn sự chân thật và tình yêu thương*

--- Venerable/*Thượng tọa* **Thích Nghiêm Đạo** ---

SLOGAN

***Genuine Partner, Genuine Awareness
Đối Tác Thật, Khởi Thức Thật***

OUR HISTORY: JOURNEY TO REACH THE SUCCESS



GENUINE PARTNER GROUP has created an **GPG ECOSYSTEM** that is based on cutting-edge logistics and actively adapts to address ***sustainability, digitalization, multimodal transport needs, compliance, future workforce & emissions reduction***.

- **GENUINE PARTNER GROUP** fosters ***sustainability*** by integrating ecological considerations into every aspect of the supply chain through strategic partnerships and innovative solutions.
- By leveraging ***digital technologies*** and ***advanced analytics***, **GENUINE PARTNER GROUP** streamlines operations, enhances efficiency, and enables seamless multimodal transportation to accommodate diverse customer needs while minimizing environmental impact.
- **GENUINE PARTNER GROUP** prioritizes ***regulatory compliance***, ensuring adherence to international standards and regulations, promoting transparency and ethical practices within the industry.
- **GENUINE PARTNER GROUP** invests in ***training and development programs*** to equip employees with the necessary competencies to thrive in the ever-evolving logistics landscape.
- Additionally, **GENUINE PARTNER GROUP** actively pursues initiatives to ***reduce emissions*** by exploring alternative energy sources, optimizing transport routes, and implementing sustainable practices throughout its operations.

Through its comprehensive ecosystem, **GENUINE PARTNER GROUP** acts as a catalyst for positive change in the logistics industry, driving sustainable growth and setting a benchmark for the future.

GPG ECOSYSTEM: APPROACH FOR SUSTAINABLE DEVELOPMENT

- Depot & Container Services
- Logistics Services
- Supply Chain Services
- Shipping & Marine Services



- Marketing & Communication Services
- Finance, HR & Legal Services
- Technology Services
- Training Services

MIND

BODY

HEART



- Hospitality Services
- Retailing & Trading Services
- Health Services
- Construction Services

GOODNESS



- Charity Fund
- Social Work Services
- Social Work Community
- Member of NGOs

The **GPG Ecosystem** is formed by 04 elements: **BODY** - **MIND** - **HEART** – **GOODNESS**

The main goal of **GPG Ecosystem** is to create value and promote sustainable development. By leveraging interaction and collaboration among its members, **GPG Ecosystem** encourages innovation, enhances performance, and improves competitiveness. It also helps enhance the customer experience, strengthen interactions, and create a favorable and potential business environment.

BODY is one of the key components of GPG Ecosystem that related to logistics – the main businesses of Genuine Partner Group. These businesses generate the main income for Genuine Partner Group used to invest to develop GPG Ecosystem.

At the center of **BODY** is the services related to container depot. Moreover there are the logistics providers, including freight forwarders, transportations, warehousing and distribution centers, and customes brokers. Futhermore by investing technology and information systems, it becomes the competitive advantage of Genuine Partner Group in the market.

For the growth of **BODY**, it will be expand more services to ensure the efficient movement of goods from producers to consumers while considering factors such as cost-effectiveness, timeliness, compliance, and sustainability.



MIND is an integral part of the GPG Ecosystem, responsible for developing business strategies marketing strategies, consulting on technology, finance, human resources, and legal issues.

MIND analyzes market trends, identifies opportunities, and proposes strategic solutions for GPG Ecosystem growth. **MIND** also advises on technology implementation, financial planning, and human resources management. Additionally, **MIND** ensures compliance with legal regulations.

With diverse and essential roles in the GPG Ecosystem, **MIND** is a reliable and dedicated team contributing to the comprehensive development of GENUINE PARTNER GROUP. With the support and guidance of **MIND**, GPG Ecosystem can achieve competitiveness and sustainable success in the domestic also international market.



The expansion activities offered by the **HEART** are designed to cater to the living needs of ecosystem members and reach out to the wider community.

This comprehensive range of services includes healthcare services, ensuring that individuals have access to quality medical care and emergency treatments. Additionally, **HEART** provides restaurant and hotel services to create a diverse culinary experience and offer luxurious accommodations for residents and visitors. Commercial centers are also established to promote economic growth and provide a variety of retail options, while entertainment complexes offer a wide range of recreational activities. Furthermore, sports and fitness activities are available to encourage an active lifestyle and foster a sense of community.

These expansion activities collectively contribute to the well-being and satisfaction of individuals within the ecosystem and extend their benefits to the broader community.



**E-COMMERCE
FOR ECOSYSTEM**

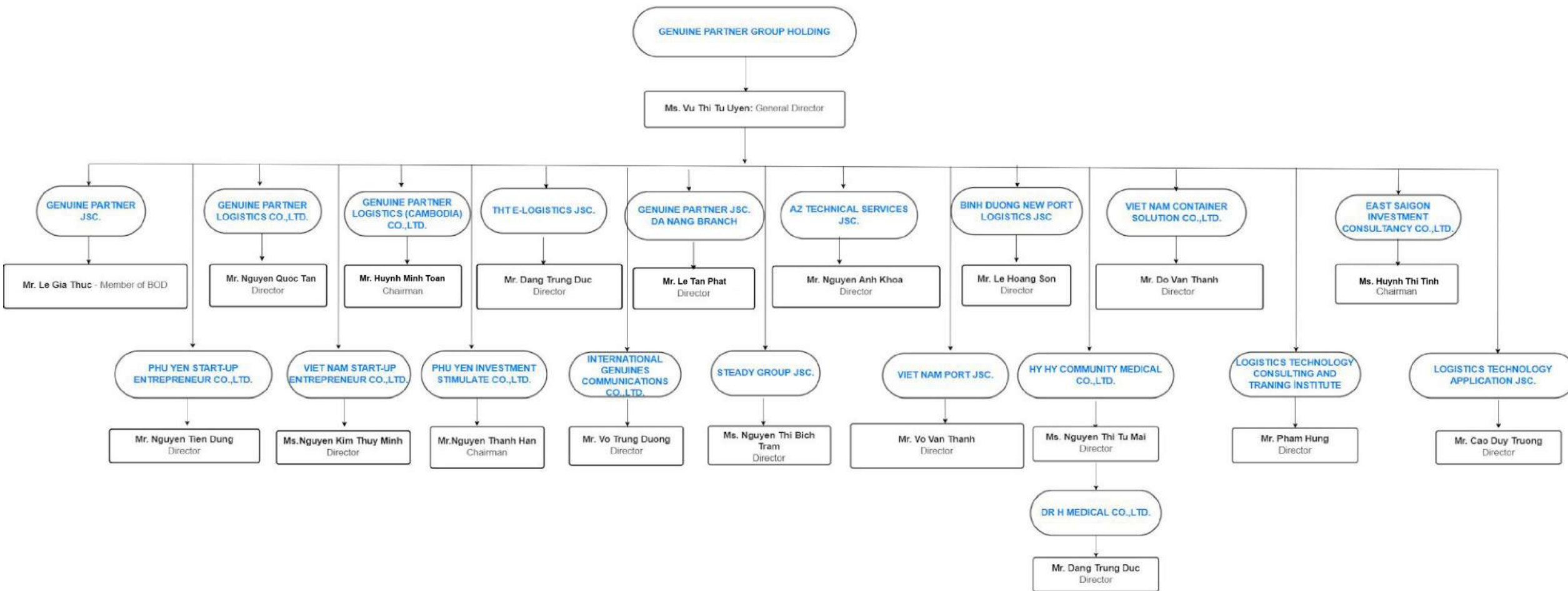
GOODNESS is a powerful force that drives community and social welfare activities of GPG Ecosystem. It encompasses the collective efforts of GENUINE PARTNER GROUP, combining financial resources, technology, and human capital from **MIND - HEART - BODY**. Together, they work tirelessly towards a shared objective: promoting GOODWILL and fostering sustainable development.

At the core of these endeavors is the recognition that true progress lies not only in economic growth but also in the well-being of every member of society. **GOODNESS** initiatives acknowledge the interconnectedness between individuals, communities, and the environment.

GOODNESS initiatives go beyond short-term fixes. They prioritize sustainable development, aiming to create long-term solutions that empower communities to thrive independently. By equipping individuals and communities with the necessary resources and skills, **GOODNESS** initiatives foster self-reliance and resilience.

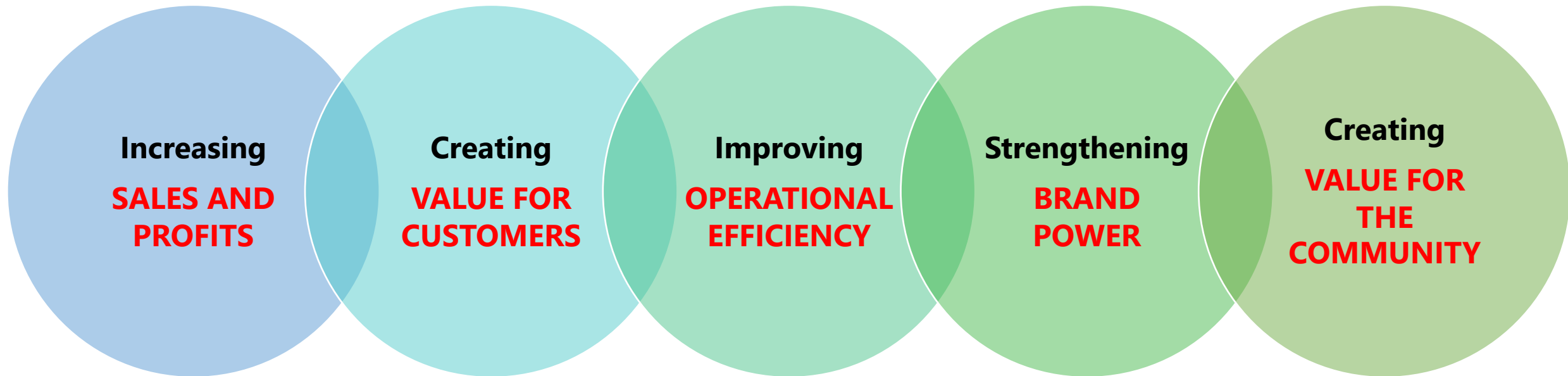


More than 14 years established and developing, **GENUINE PARTNER GROUP** has more than 20 companies and units, as well as many projects being implemented throughout Vietnam and International



GPG ECOSYSTEM: OBJECTIVES FOR SUSTAINABLE DEVELOPMENT

The **GPG ECOSYSTEM** revolves around building a secure, stable, and sustainable business environment to create value for the shareholders, customers and stakeholders.



SUSTAINABLE DEVELOPMENT

sustainability, digitalization, multimodal transport needs, compliance, future workforce, and emissions reduction

OUR BODY COMPANIES: DEPOT & LOGISTICS SERVICES

GENUINE PARTNER GROUP is one of key providers in container related services such as container depot, integrated logistics, vessel husbandry and other logistics solution services in Viet Nam & Cambodia.

GENUINE PARTNER
JSC.

GENUINE PARTNER
LOGISTICS CO. LTD

GENUINE PARTNER
LOGISTICS
(CAMBODIA) CO. LTD

THT E-LOGISTICS CO.
LTD

GENUINE PARTNER
JSC.
DA NANG BRANCH

AZ TECHNICAL
SERVICES JSC.

BINH DUONG NEW
PORT LOGISTICS JSC.

VIETNAM
CONTAINER
SOLUTION CO. LTD

VIETNAM START-UP
ENTREPRENEUR CO.
LTD

VIETNAM PORT JSC.

DEPOT & CONTAINER SERVICES

- Container Depot
- Container Inspection
- Maintenance & Repair
- Garment on Hanger (GOH)
- Container Trading and Leasing
- Container Reposition
- Office/ Mobile House

LOGISTICS SERVICES

- Freight Forwarding
- Cross Border Logistics
- Inland & Multimodal Transportation
- General/ CFS/ Bonded Warehouses
- Distribution Services
- Project Cargo Services
- Supply Chain Consultant

SHIPPING & MARINE

- Husbandry/ Boarding Agent
- Liner Agency
- Ship Chartering & Brokerage
- Port/ ICD Management

I. DEPOT & CONTAINER SERVICES

- ❖ One of the leading operators in Container Depots in Vietnam.
- ❖ 15 Inland Depots + 09 location Mobile M&R Center.
- ❖ 60 hectares of Container Depot Yard located at major Industrial Zones.
- ❖ All Depots are equipped with updated e-Business tools such as EDI, e-EIR, e-Payment, e-Invoice, etc.



1

HO CHI MINH

1. Chan That Phu Thuan
2. Chan That Long Thanh My
3. E-Depot Linh Xuan

4

HAI PHONG

1. THT E-Logistics

2

BINH DUONG

1. Tay Nam Binh Duong
2. Chan That Song Than
3. E-Depot Tan Binh

5

PHNOM PENH

1. GPG Trapang Krasang
2. GPG Khmer Food Center

3

DANANG

1. Chan That Tien Sa 1
2. Chan That Tien Sa 2
3. PTSC - Genuine Partner

6

SIHANOUKVILLE

1. GPG Sihanoukville Depot

7

BANGKOK

1. GPG Bangkok Depot

1. Ho Chi Minh City Depots



Chân That Phu Thuan

A

Land Size: **40.000 sqm**

Location: 319 Dao Tri St. Phu Thuan, Dist.7

- 1** 11km to Cat Lai Port
- 2** 6km to VICT/ Tan Thuan IP



Chân That Long Thanh My

B

Land Size: **200.000 sqm**

Location: Long Thanh My

- 3** 5km to Samsung/ Hi- Tech
- 3** 7km to Linh Trung IP



E-Depot Linh Xuan

C

Land Size: **20.000 sqm**

Location: Linh Xuan, Thu Duc

- 4** 10km to Dong An IP
- 5** 10km to Binh Duong Port & Dong Nai Port



2. Binh Duong Province Depots



Tay Nam Binh Duong

D

Land Size: **25.000 sqm**

Location: Near to Dong Nai Bridge

5 2km to Binh Duong Port

6 3km to TBS warehouse



Chan That Song Than

E

Land Size: **60.000 sqm**

Location: Song Than IP and Inside ICD Song Than

7 1km Song Than IP

4 4km Dong An IP



E-Depot Tan Binh

F

Land Size: **25.000 sqm**

Location: My Phuoc Tan Van

8 6km to VSIP

9 20km to My Phuoc IP, VSIP 2, others IP.



3. Da Nang Depots

TOTAL AREA: **47,000 sqm**

CHAN THAT TIEN SA 1 = 30,000 sqm
CHAN THAT TIEN SA 2 = 7,000 sqm
PTSC - GENUINE PARTNER = 10,000 sqm

- ❖ Full operation by Genuine Partner Group Management
- ❖ Located 2km to Tien Sa Port



4. Hai Phong Depot: THT E-Logistics

TOTAL AREA: **100,000 sqm**

- ❖ Located at Dinh Vu area: Near the Ports at Dinh Vu and distance to Lach Huyen Port is 20km
- ❖ We have offices at Hanoi and Hai Phong, faster assistant to client at both locations



TOTAL AREA: **50,000 sqm**

GPG TRAPANG KRASANG DEPOT

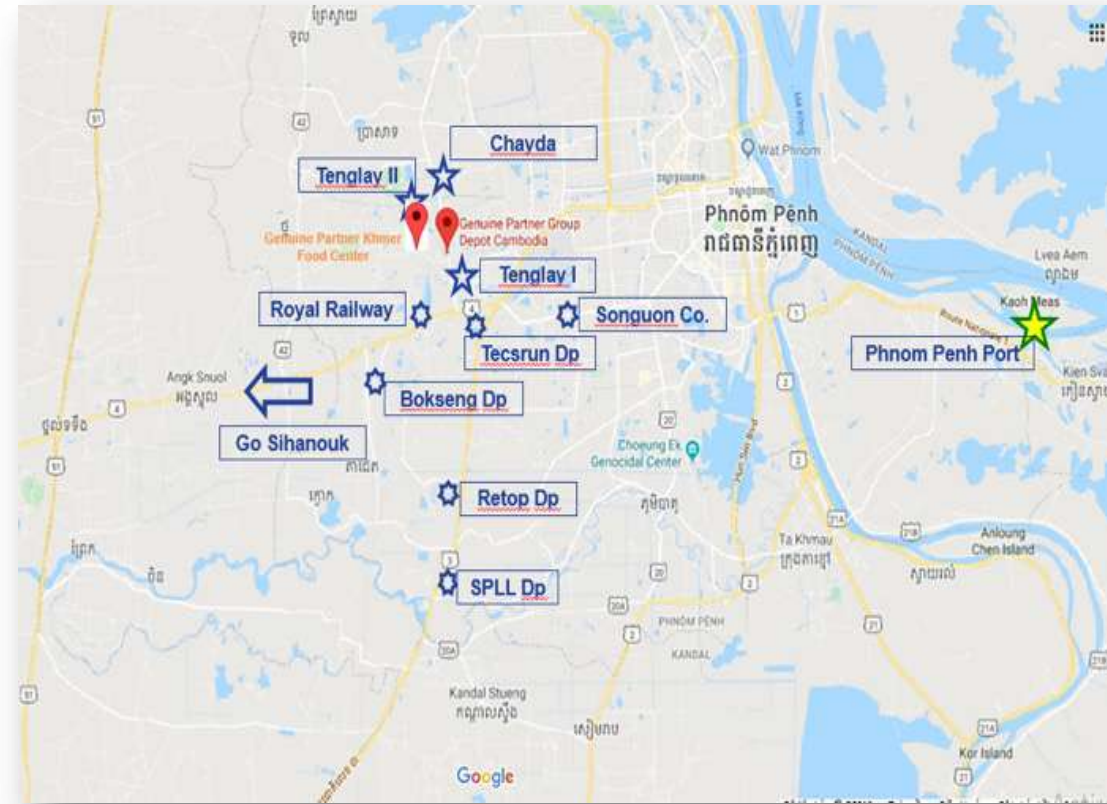
18,000 sqm

GPG KHMER FOOD CENTER

=

= **32,000 sqm**

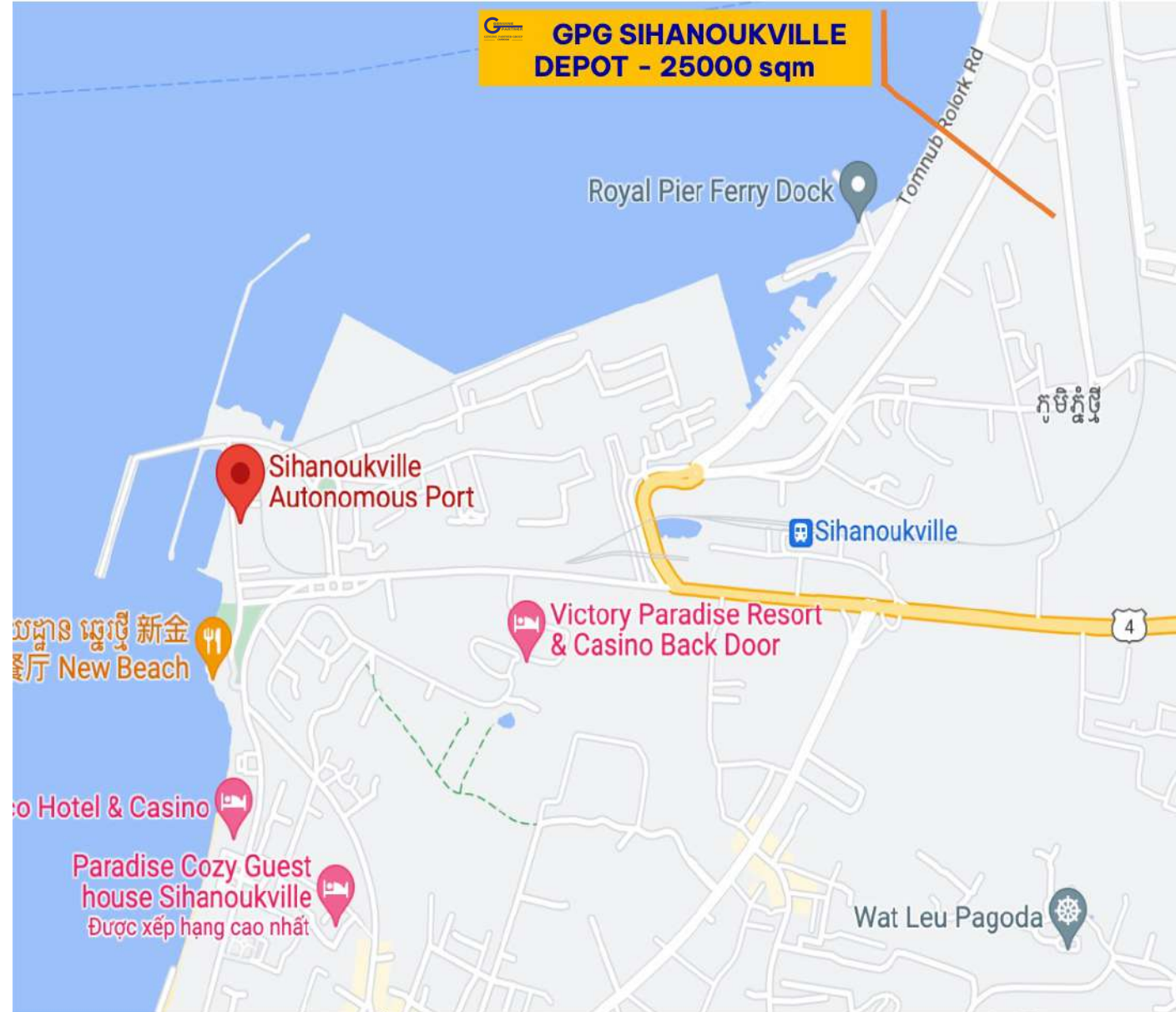
- ❖ We are leading operator in Cambodia
- ❖ Full services for Dry & Reefer Container
- ❖ Next to Teng Lay Dry Port about 100m and Union Dry Port about 50m
- ❖ Convenient for trucking between Port & Depot
- ❖ Strategic location for developing connecting hub for multi-modal transportation, warehousing & logistics services, especially for cross border services



6. Sihanoukville Depot

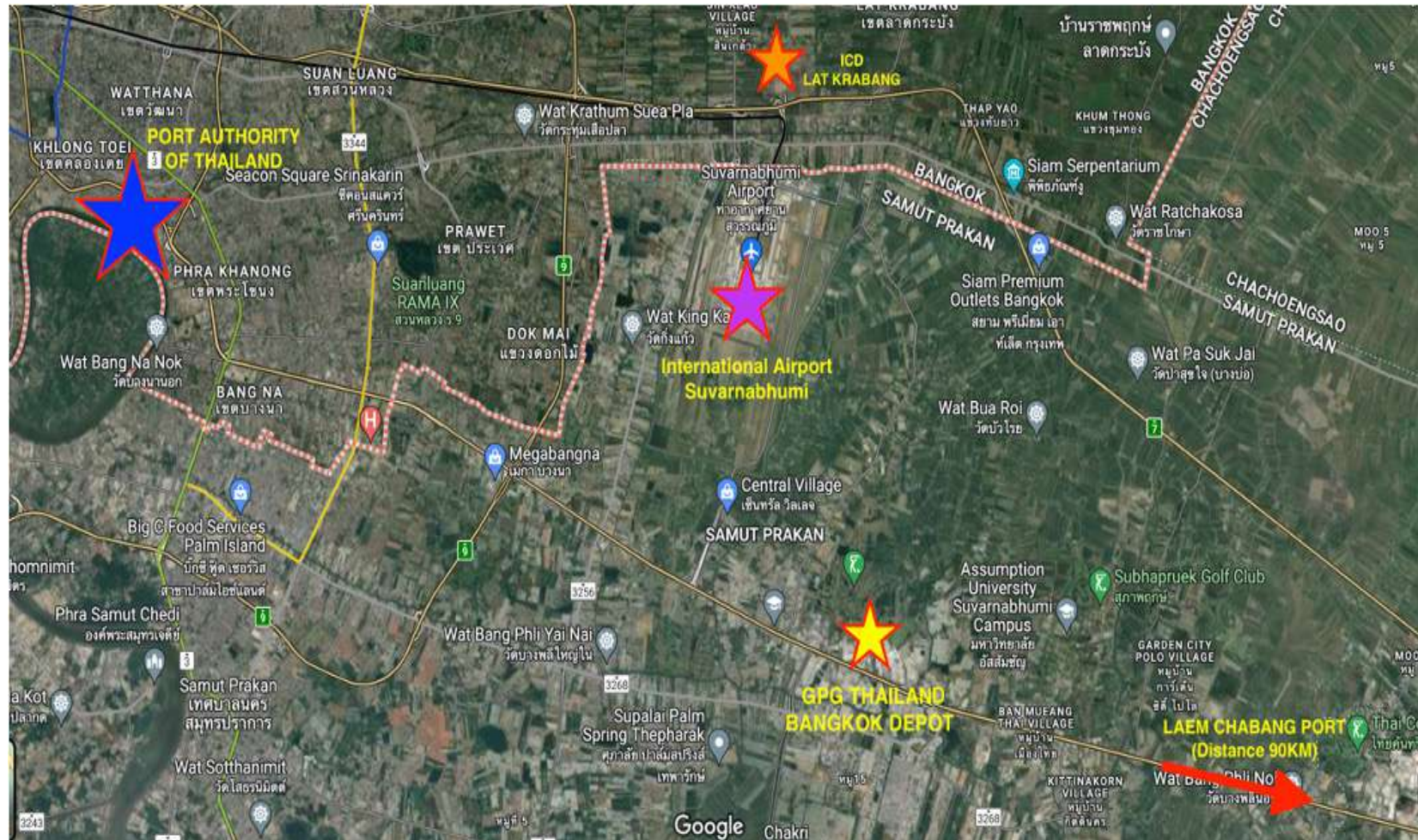
TOTAL AREA: **25,000 sqm**

- ❖ Belong to Sihanoukville special economic Zone
- ❖ Same quality and SOP with other GPG depot.
 - M&R service for reefer and dry container
 - System Control: Yard plan, EDI, etc.
 - e-Technology: e-EIR, e-Invoice, etc.



TOTAL AREA: **20,000 sqm**

- ❖ Capacity: **3,300 TEUs**
- ❖ Equipment: 2 stackers
- ❖ Distance:
 - 33km to Port Authority Thailand
 - 90km to Laem Chabang Port
 - 20km to Suvarnabhumi International Airport
- ❖ We provide service as below:
 - M&R service: Reefer and Dry container
 - e-Technology: e-EIR, e-Invoice, e-Payment, Yard plan, EDI, etc.
 - Trucking service: 20 trucks



Distribution &
Door Delivery



Multimodal
Transportation

Warehouse

Logistics Solutions

- **Freight Forwarding**
- **Cross Border Logistics**
- **Inland & Multimodal Transportation**
- **General/CFS/Bonded Warehouses**
- **Distribution Services**
- **Project Cargo Services**
- **Supply Chain Consultant**

Distribution & Door Delivery



TOTAL AREA: **115,000 sqm** General warehouse (**Owned and Long-Term Lease**)

- 🔗 Bonded warehouse
- 🔗 CFS warehouse
- 🔗 Loading/ Unloading
- 🔗 Repacking, Marking, Labeling
- 🔗 Other warehousing services

🏠 Smart Distribution Center – Hai Phong:	26,000 sqm
🏠 Tan Phuoc Khanh Center – Binh Duong:	38,000 sqm
🏠 Chan That Long Thanh My Warehouse:	35,000 sqm
🏠 ETD Warehouse:	12,000 sqm
🏠 Distribution Center:	4,000 sqm



Multimodal Transportation



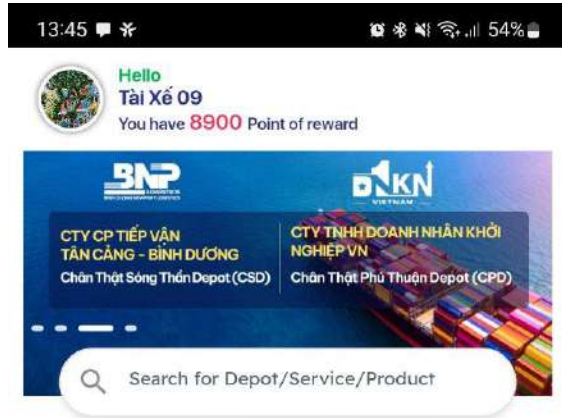
- ❖ One of the few companies in Vietnam which permitted for cross border license between Vietnam–Cambodia–Lao
- ❖ Our fleet of 30 container trucks with 70 trailers and 60 light trucks (from 1.0 to 13.6 tonnages), 15 trucks permitted for cross border license.
- ❖ GPG LOGS provides a reliable option:
 - ✓ Customs clearance at Viet Nam, Cambodia and Lao border
 - ✓ Time specific delivery
 - ✓ Direct delivery
 - ✓ Real time tracking
 - ✓ Maximize customer benefit

Logistics Technology Application Joint Stock Company (LTA) is established in 2022 specializing in providing intelligent logistics solutions. LTA focuses on developing and applying advanced technologies to provide transportation services, warehouse management, and comprehensive logistics solutions for customers.

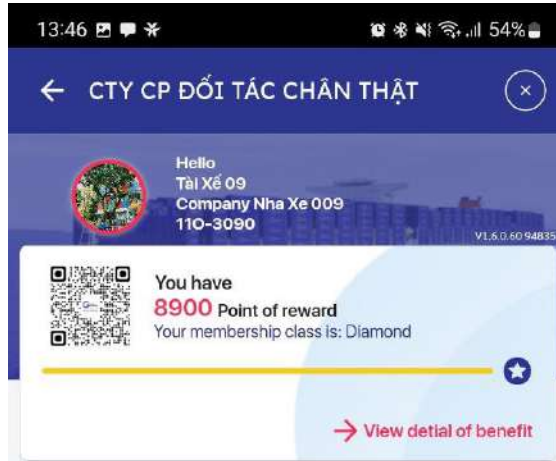
Equipped with a team of experts with extensive experience in the logistics field, LTA always provides the most optimal solutions to solve transportation, warehousing, and cargo management issues for customers. With modern and advanced solutions, LTA is committed to providing customers with efficient logistics solutions that save costs and enhance trust.

With a sustainable development orientation, LTA always strives to become the most reliable and trustworthy partner of customers in the logistics industry.

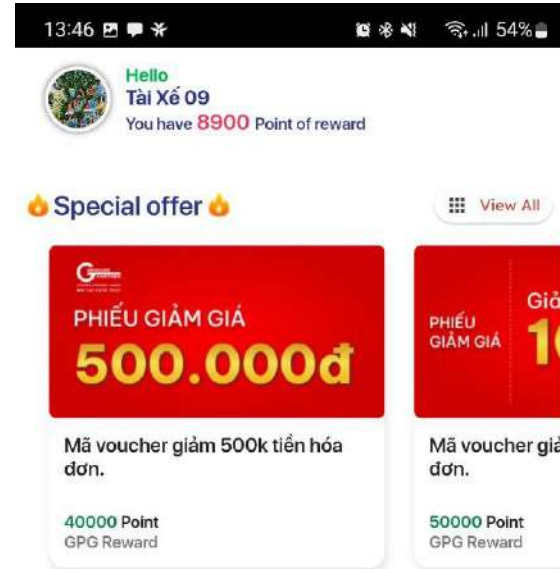
Currently, LTA is in charge for all technology solutions for Genuine Partner Group. This helps Genuine Partner Group be proactive and master technology for the development and operation of GPG Ecosystem.



e-Depot system



Major driver



Discount %



Direct discount



QR đổi 1 Chai nước
10000 point
GPG Reward

Guideline

Back

Change Points



FOR TRUCK DRIVER

- No cash - safe
- Paperless - safe and easy
- Save time by working on a smartphone device
- Easily contact depot via chat box on the app
- Good planning can increase vehicle turnover

FOR TRUCKING COMPANY

- Efficient management of trucks and drivers
- Save management human resources.
- No need to spend cash on the driver. Safe and convenient.
- Easily change drivers and trucks for orders due to problems arising

FOR CARRIER

- Get data about container movements on time and accurately.
- Manage equipment stock accurately
- No loss of DEM/DET fees
- Increase service quality for customers
- Quick access to customer information.

FOR DEPOT OPERATOR

- Quickly and accurately forecast the number of orders registered by customers.
- Control the depot operation process effectively through data updated in real time.
- Plan human resources effectively
- Cost savings from eliminating waste due to long waiting times.

LONG-TERM CLIENTS | DEPOT SERVICES

DOMESTIC



INTERNATIONAL

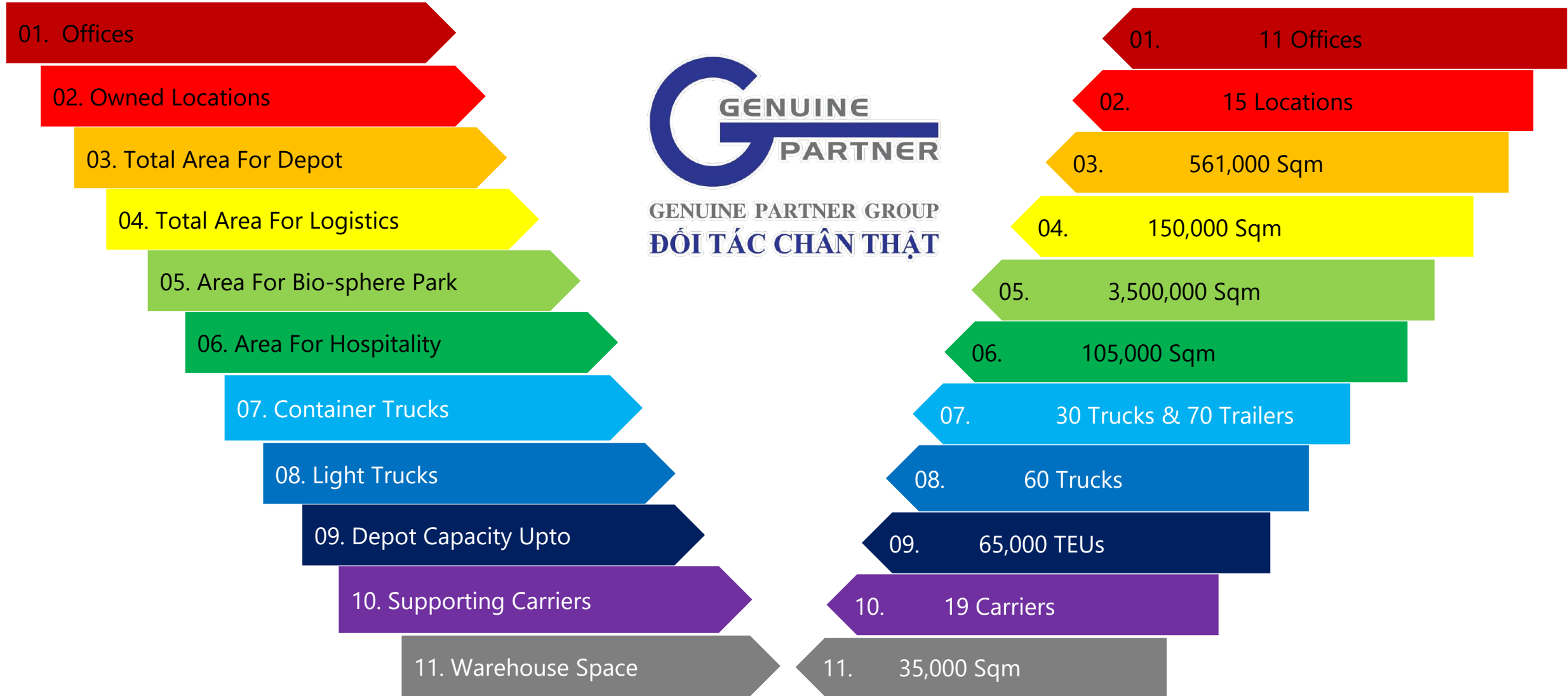


and more...

LONG-TERM CLIENTS | INTERGRATED LOGISTICS



and more...



OUR CERTIFICATES & QUALIFICATIONS



OUR CERTIFICATES & QUALIFICATIONS







GOGREEN LOGISTICS

- i-Depot SuperAPP@LTA in Container Depot Services
- ✓ Multi-Platforms, Multi-Utilities
- ✓ Cashless
- ✓ Optimized Processes
- ✓ Paperless
- ✓ High Working Efficiency
- ✓ Friendly Ecosystem



CHARITY ACTIVITIES

- ✓ Donated 03 ambulances to hospitals
- ✓ Set up a free hotline to support health
- ✓ Employment and accommodation, supporting pandemic prevention equipment
- ✓ Set up 12 containers at the gateway of Ho Chi Minh City...
- ✓ Completed construction and handed over of more than 11 An Yen bridges in the plan of 100 bridges for difficult areas.
- ✓ Provide community house for workers.
- ✓ Donate a library of books
- ✓ Donate to a benevolent home
- ✓ Give gifts to students and teachers in difficult remote areas
- ✓ Awarding scholarships to poor students
- ✓ Donate wheelchairs to disabled people
- ✓ Free medical examination and medicine for people in difficult areas



ENVIRONMENT PROTECTION

- ✓ Area for Bio-sphere Park: 3.500.000 m² in Phu Yen Province
- ✓ Finding the electronic stackers to operate
- ✓ Working with the 3rd party to consult for better environment of reduced carbon and minimized emissions

WEBSITE



ZALO OA



IF YOU WANT TO DISCUSS MORE WITH US

and find out how we collaborate to succeed, come on over and meet us!

PLEASE VISIT OUR HEAD OFFICE AT

No. 2A, 5th Street, An Phu Ward, Thu Duc City, Ho Chi Minh City, Vietnam

EXPLORE MORE INFORMATION AT

Website : <https://www.genuinepartner.com>

Email : info@genuinepartner.com

Facebook : <https://www.facebook.com/GenuinePartnerGroup>

**THANK
YOU**

FOR YOUR ATTENTION

"Your Success is Our Success"
